



ATBF1 Polyclonal Antibody

| | |
|---------------------------|--|
| Catalog No | YP-Ab-01544 |
| Isotype | IgG |
| Reactivity | Human;Mouse |
| Applications | IHC;IF;ELISA |
| Gene Name | ZFHX3 |
| Protein Name | Zinc finger homeobox protein 3 |
| Immunogen | The antiserum was produced against synthesized peptide derived from human ZFHX3. AA range:761-810 |
| Specificity | ATBF1 Polyclonal Antibody detects endogenous levels of ATBF1 protein. |
| Formulation | Liquid in PBS containing 50% glycerol, 0.5% BSA and 0.02% sodium azide. |
| Source | Polyclonal, Rabbit,IgG |
| Purification | The antibody was affinity-purified from rabbit antiserum by affinity-chromatography using epitope-specific immunogen. |
| Dilution | IHC: 1/100 - 1/300. ELISA: 1/10000.. IF 1:50-200 |
| Concentration | 1 mg/ml |
| Purity | ≥90% |
| Storage Stability | -20°C/1 year |
| Synonyms | ZFHX3; ATBF1; Zinc finger homeobox protein 3; AT motif-binding factor; AT-binding transcription factor 1; Alpha-fetoprotein enhancer-binding protein; Zinc finger homeodomain protein 3; ZFH-3 |
| Observed Band | |
| Cell Pathway | Nucleus . Cytoplasm . Translocates from the cytoplasm to the nucleus following TGF-beta stimulation. Expressed in nuclear body (NB)-like dots in the nucleus some of which overlap or closely associate with PML body. . |
| Tissue Specificity | Not found in normal gastric mucosa but found in gastric carcinoma cells (at protein level). Expression is higher in ER-positive breast tumors than ER-negative breast tumors (at protein level). |
| Function | function:Transcriptional activator that binds to the AT-rich core sequence of the enhancer element of the AFP gene.,PTM:Phosphorylated upon DNA damage, probably by ATM or ATR.,similarity:Contains 22 C2H2-type zinc fingers.,similarity:Contains 4 homeobox DNA-binding domains.,subunit:Interacts with FBNP3., |
| Background | This gene encodes a transcription factor with multiple homeodomains and zinc finger motifs, and regulates myogenic and neuronal differentiation. The encoded protein suppresses expression of the alpha-fetoprotein gene by binding to an AT-rich enhancer motif. The protein has also been shown to negatively regulate c-Myb, and transactivate the cell cycle inhibitor cyclin-dependent kinase inhibitor |



1A (also known as p21CIP1). This gene is reported to function as a tumor suppressor in several cancers, and sequence variants of this gene are also associated with atrial fibrillation. Multiple transcript variants expressed from alternate promoters and encoding different isoforms have been found for this gene. [provided by RefSeq, Sep 2009],

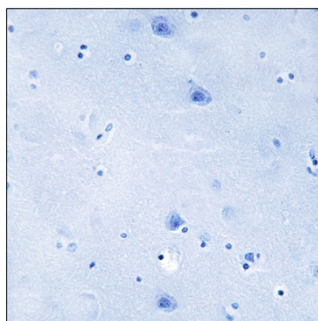
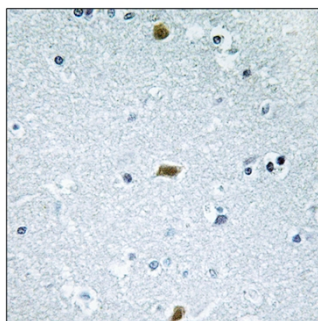
matters needing attention

Avoid repeated freezing and thawing!

Usage suggestions

This product can be used in immunological reaction related experiments. For more information, please consult technical personnel.

Products Images



Immunohistochemistry analysis of paraffin-embedded human brain tissue, using ZFHX3 Antibody. The picture on the right is blocked with the synthesized peptide.